



Direct Dial/Ext: 01622 694196
Fax:
e-mail: lizzy.adam@kent.gov.uk
Ask for: Lizzy Adam
Your Ref:
Our Ref:
Date:

Dear Member

HEALTH OVERVIEW AND SCRUTINY COMMITTEE - FRIDAY, 31 JANUARY 2014

I am now able to enclose the presentation given by KMPT on Friday, 31 January 2014 at the meeting of the Health Overview and Scrutiny Committee.

Agenda No	Item
8	<u>Kent and Medway NHS and Social Care Partnership Trust: Update</u> (Pages 3 - 10)

Yours sincerely

A handwritten signature in black ink, appearing to read 'Peter Sass', is written over a light blue horizontal line.

Peter Sass
Head of Democratic Services

This page is intentionally left blank



KMPT Delivering our Transformation Vision

Kent County Council Briefing

31 January 2014

respect - open - accountable - working together - innovative - excellence

Contents

Our Transformation Vision must deliver our Clinical Strategy

We are committed to delivering a range of benefits from our transformation

We have adopted a clinically led approach to programme delivery

We are committed to working with all of our stakeholders on programme design and implementation



respect - open - accountable - working together - innovative - excellence

Our Transformation Programme must deliver our Clinical Strategy

Page 5

At KMPT our vision is to ... deliver excellent care personal to you, delivering quality through partnership. Creating a dynamic system of care, so people receive the right help, at the right time, in the right setting with the right outcomes

Our Refreshed Clinical Strategy

Provide excellent community services close to home reducing the number of people who need inpatient care. Where necessary our community services will support the length of stay being as short as possible

Focus on the recovery model ensuring positive outcomes – service integration and partnership working

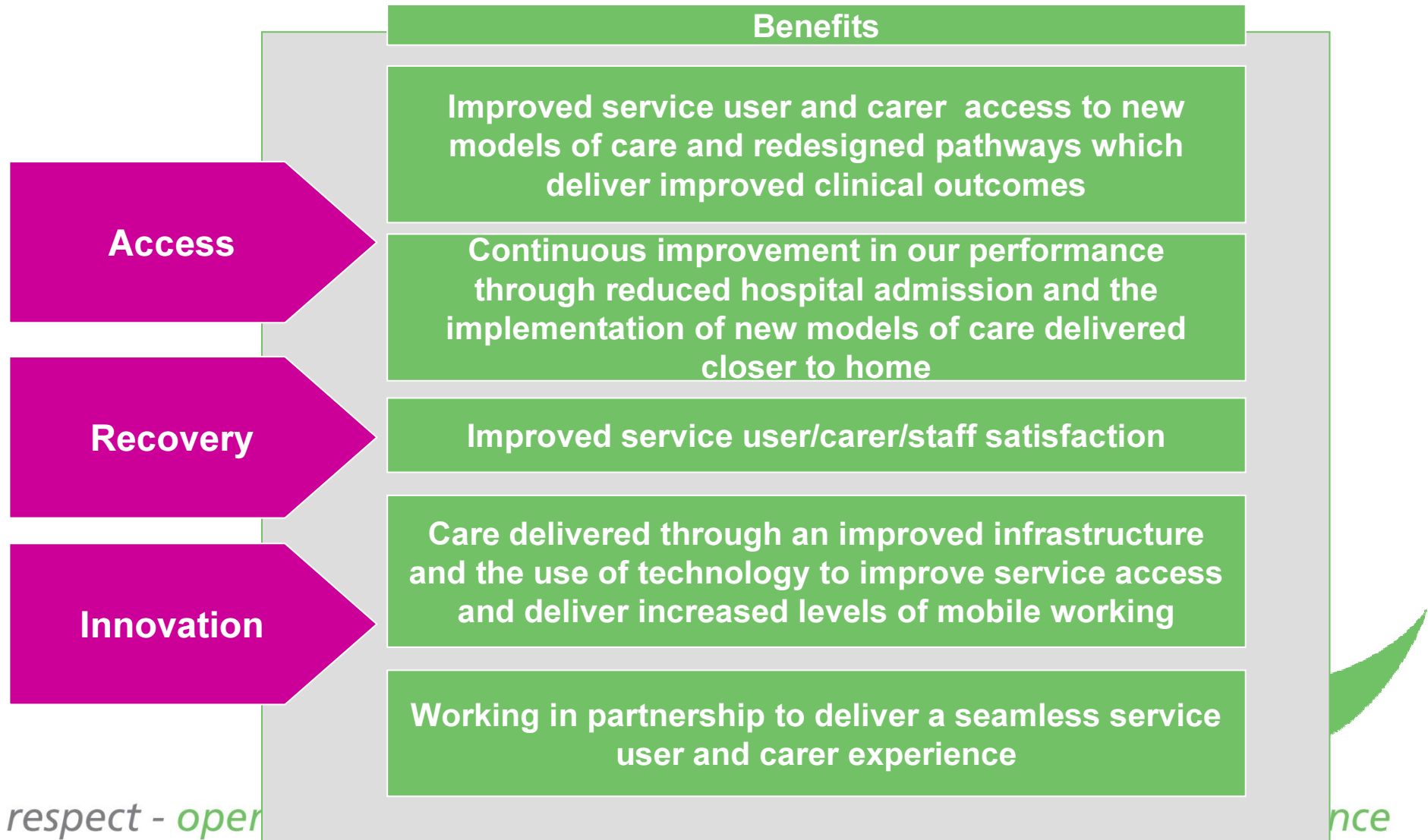
Improve quality and dignity in services including a better environment and improved use of technology to release clinical time, promote mobile working and improve access

Expand some of our strongest specialist services where appropriate to potentially provide those across a wider geography

respect - open - accountable - working together - innovative - excellence

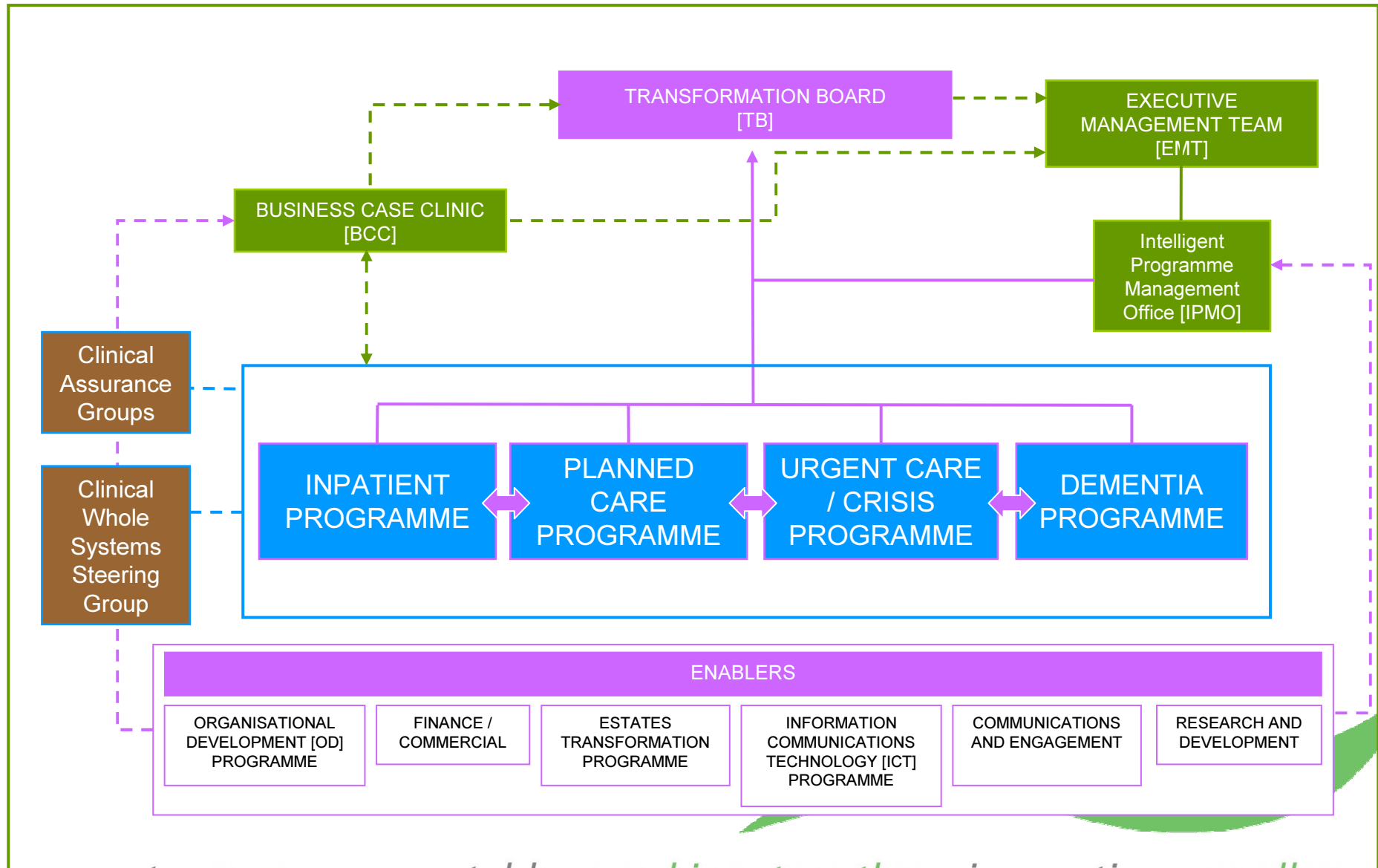
We are committed to delivering a range of benefits from our transformation

Page 6



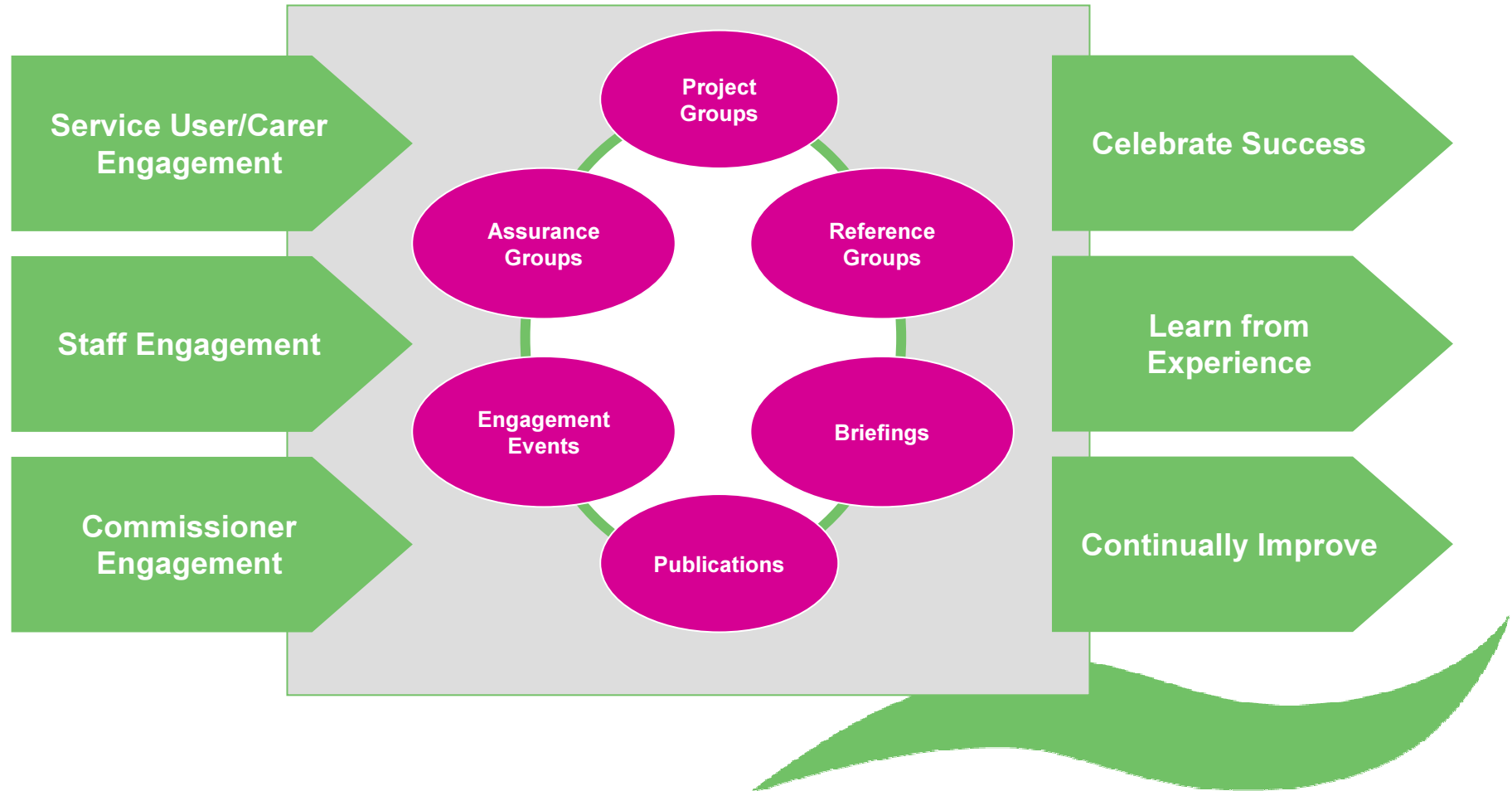
We have adopted a clinically led approach to programme delivery

Page 7



respect - open - accountable - working together - innovative - excellence

We are committed to working with all of our stakeholders on programme design and implementation



Our Transformation Vision Statement



respect - open - accountable - working together - innovative - excellence

The KMPT Transformation Vision

At KMPT our passion is to ensure that the service user is at the centre of everything we do.

Our major challenge is to move away from traditional models of service delivery and to implement new models of care which are integrated and enable early access. These models will be centred on preventing hospital admission and promoting the delivery of care at home or in the community with a recovery focus.

We are committed to working with our service users, staff, carers and commissioners on this improvement journey. Through our whole systems approach we will focus on designing services which meet local needs. This will be achieved through our clinically led transformation programme which is aimed at delivering improved outcomes through changing how our services are delivered, supporting our staff to develop and improving how we work across organisational and service boundaries.

This means that across the organisation, irrespective of role or grade, that we must all take responsibility for ensuring that we challenge the things that we know do not work and that we work with our service users and within our teams to deliver the excellence services which we believe in.

The result of this will be that we improve service user access, service user and staff experience, clinical outcomes and our overall efficiency and effectiveness.

We fundamentally believe that if we do not meet these needs then we as an organisation will not grow and develop and we will not deliver the excellence which we are passionate about.

respect - open - accountable - working together - innovative - excellence